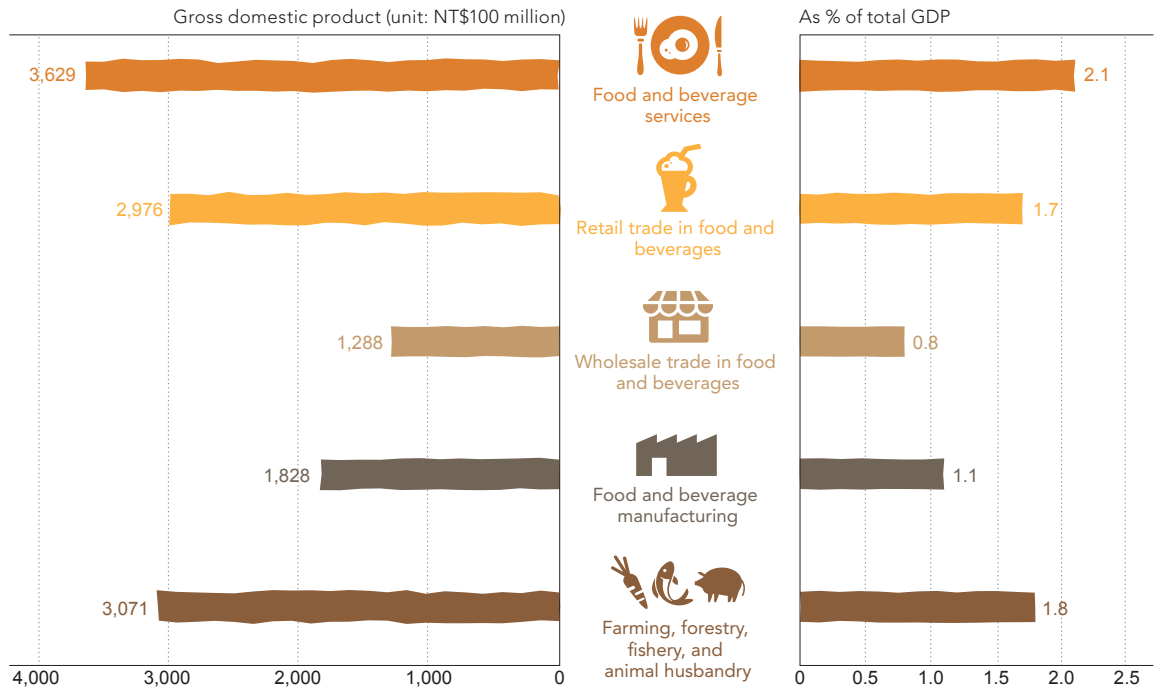


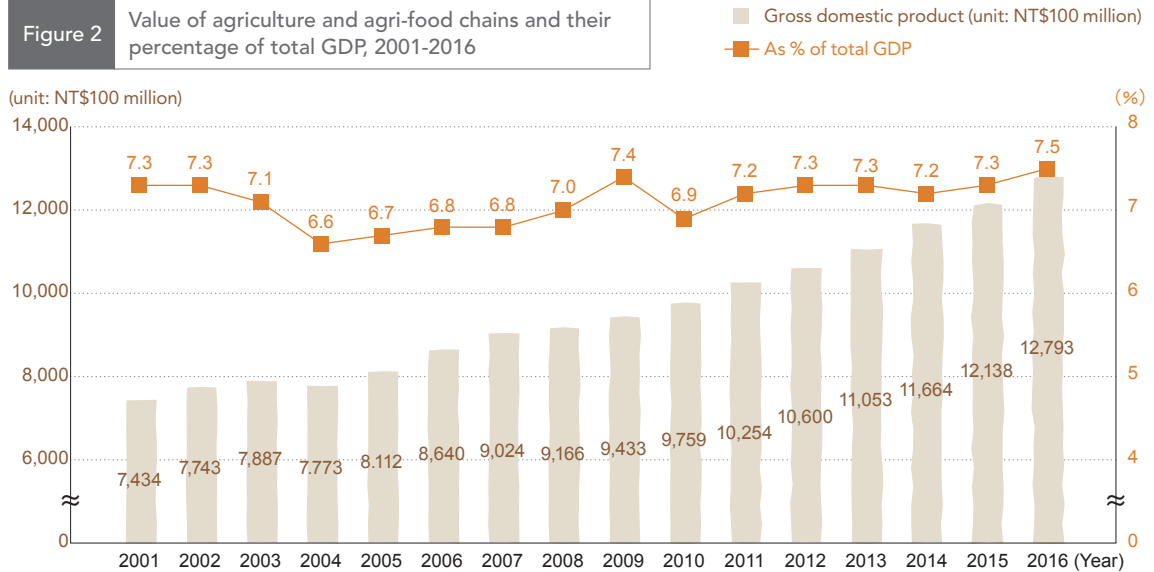
### 3. Selected Agricultural Statistics

Figure 1 Value of agriculture and agri-food chains and their percentage of total GDP, 2016



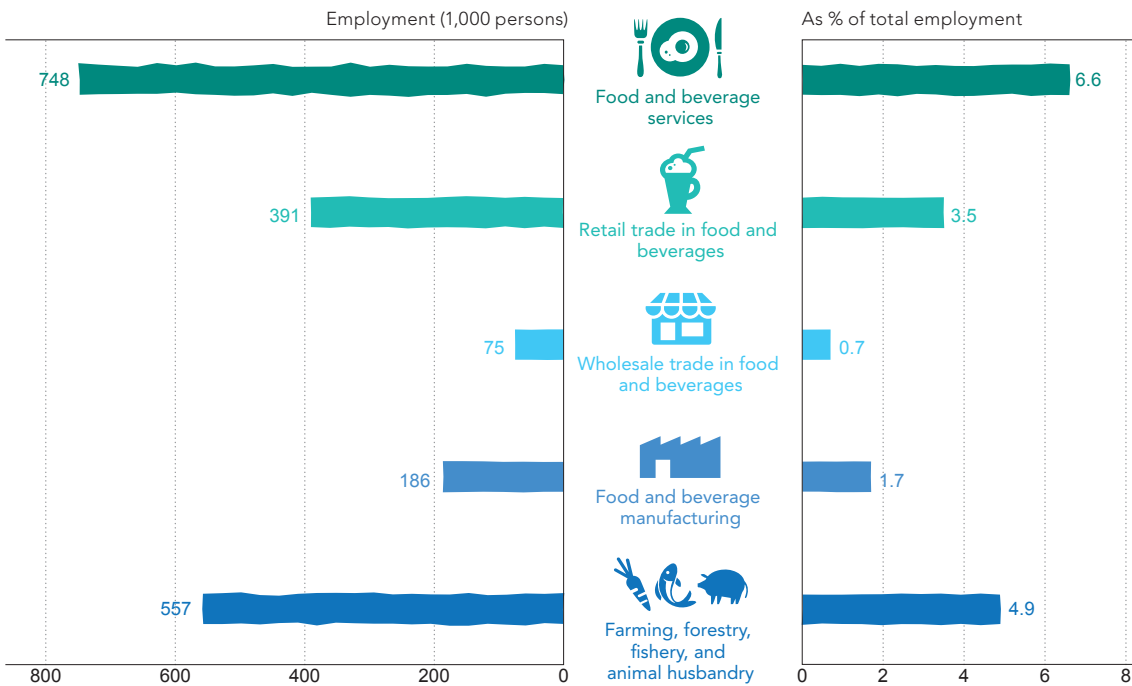
Source: Statistics Office, COA

Figure 2 Value of agriculture and agri-food chains and their percentage of total GDP, 2001-2016



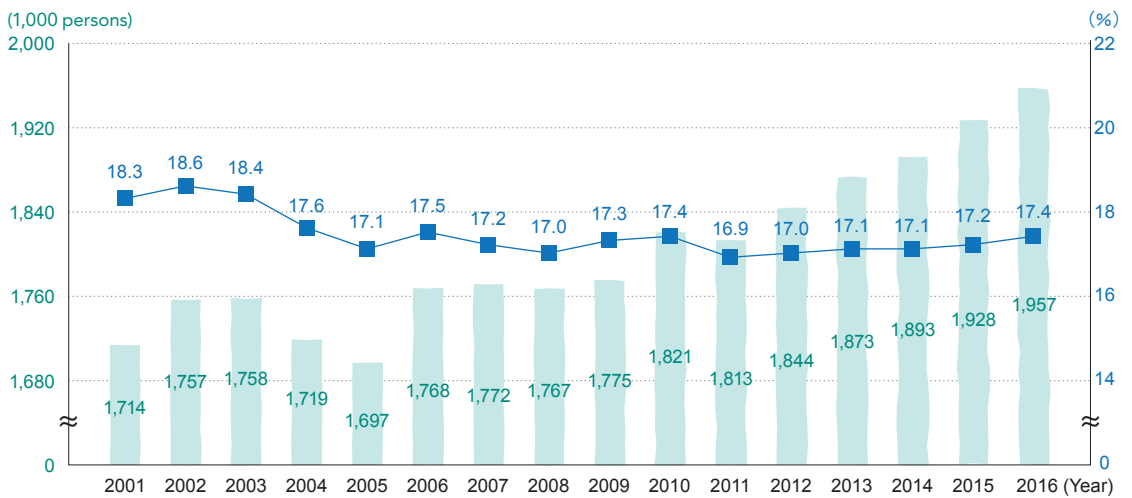
Source: Statistics Office, COA

Figure 3 Employment in agriculture and agri-food chains and its percentage of total employment, 2016



Source: Statistics Office, COA

Figure 4 Employment in agriculture and agri-food chains and its percentage of total employment, 2001-2016



Source: Statistics Office, COA

Figure 5 Value and composition of agricultural production, 2005-2017

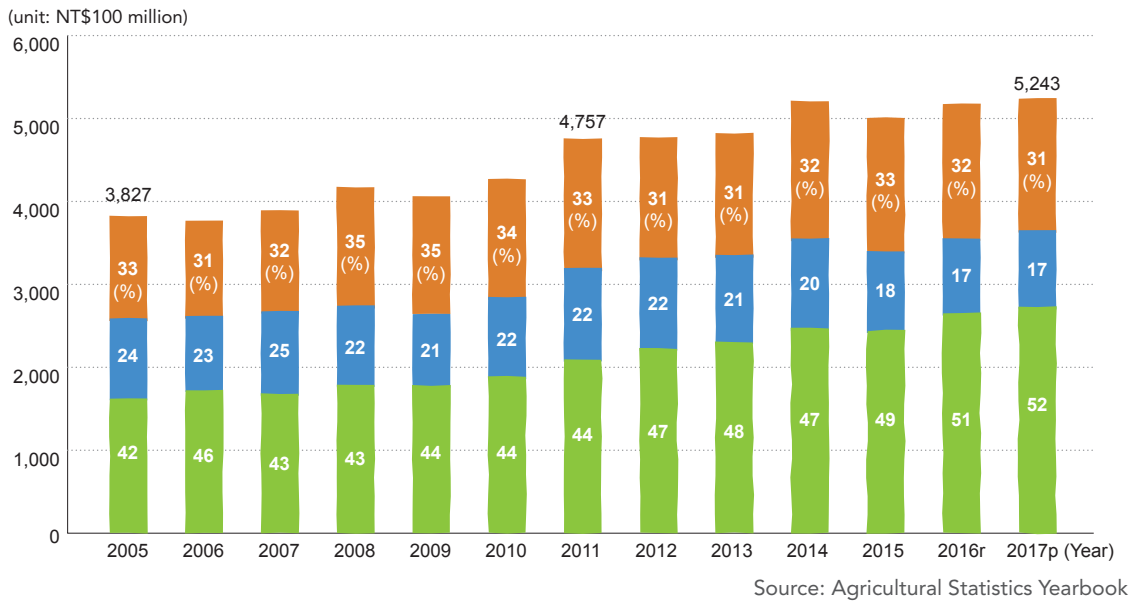
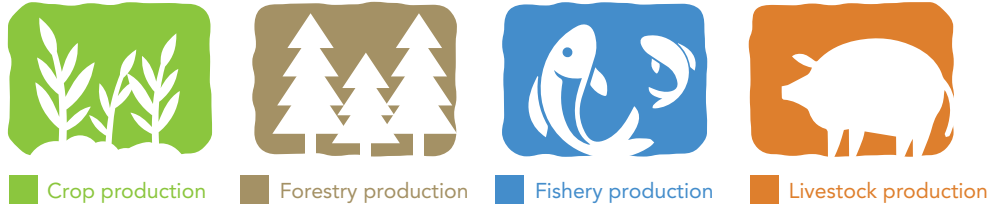


Figure 6 Demographic characteristics of employment in agriculture, 2017

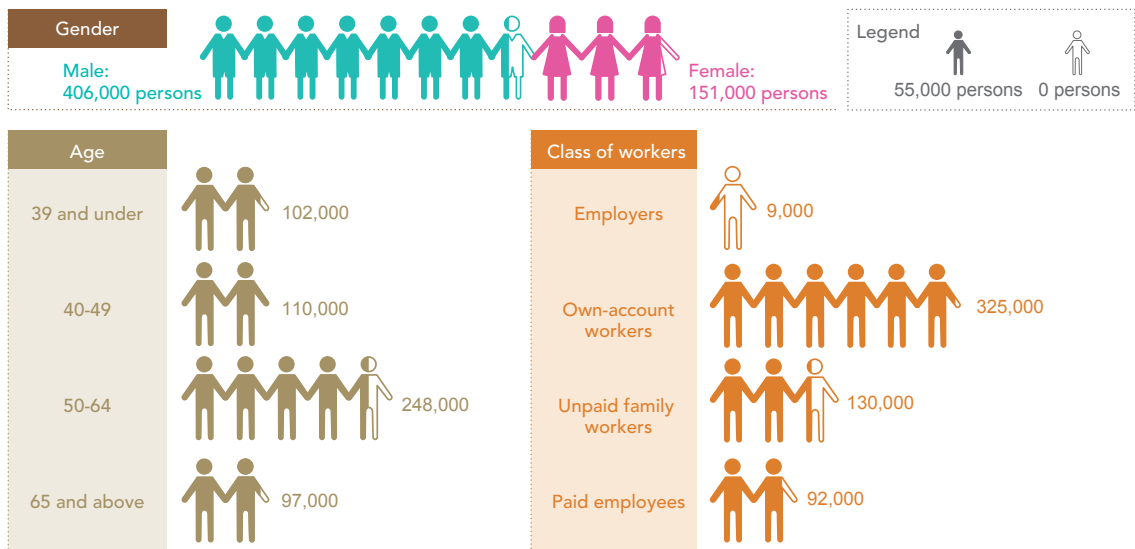
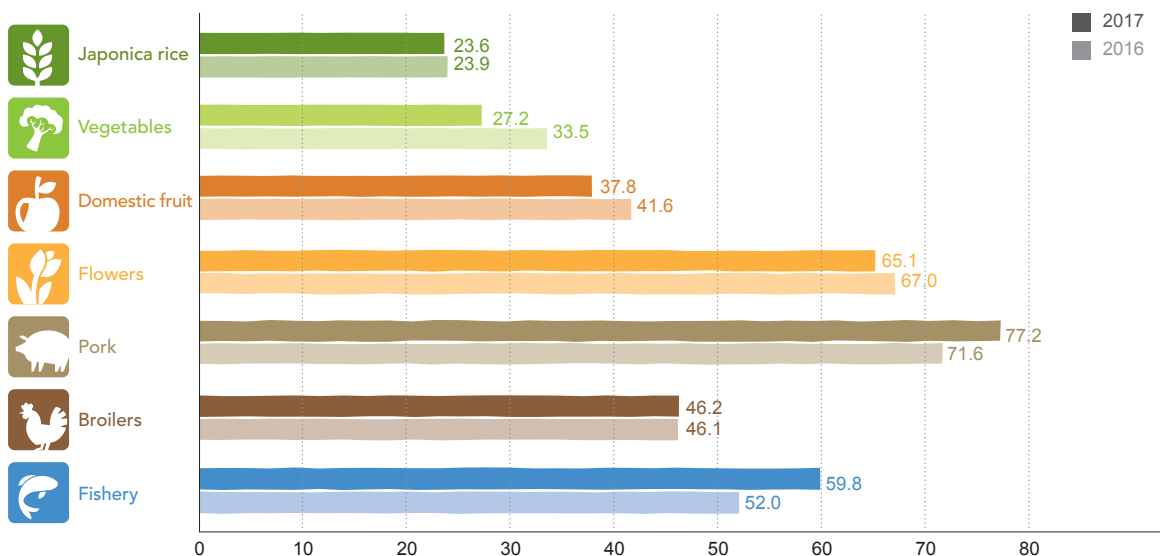


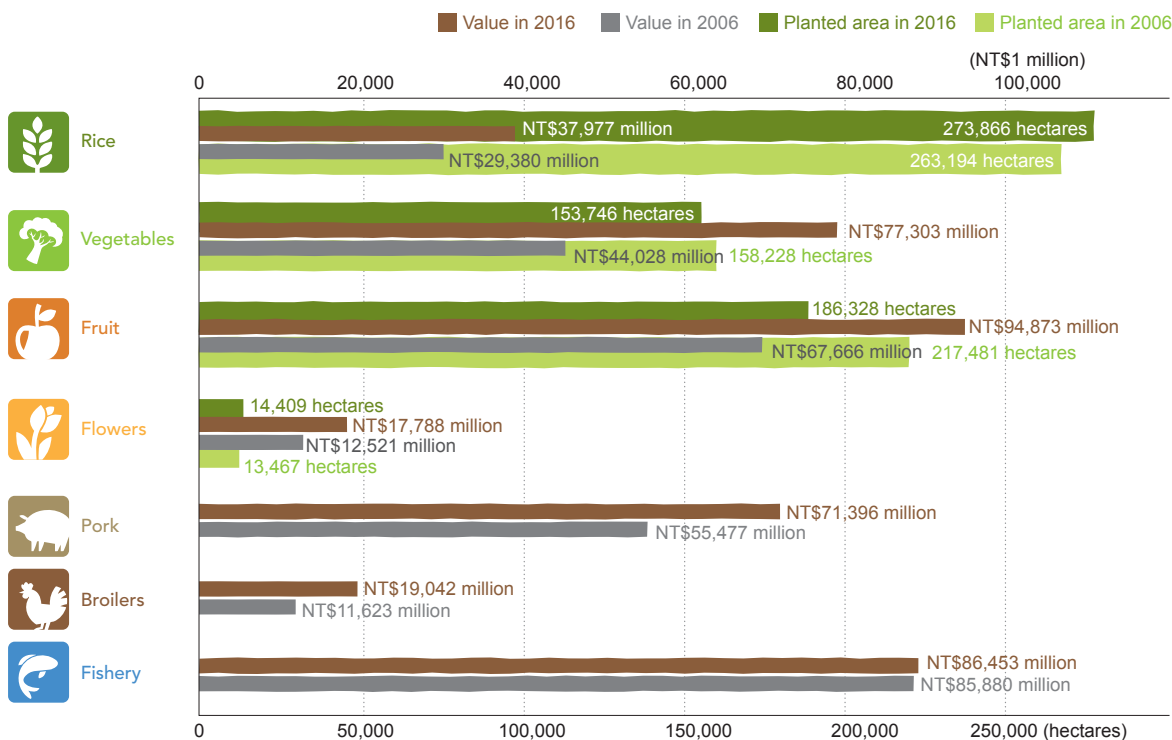
Figure 7 Prices of selected agricultural products, 2016 vs. 2017



Note 1: All prices are in NT\$ per kilo, except flowers, which are in NT\$ per bunch.  
 Note 2: Figures for Japonica rice and broilers are farm prices, figures for other items are wholesale prices.

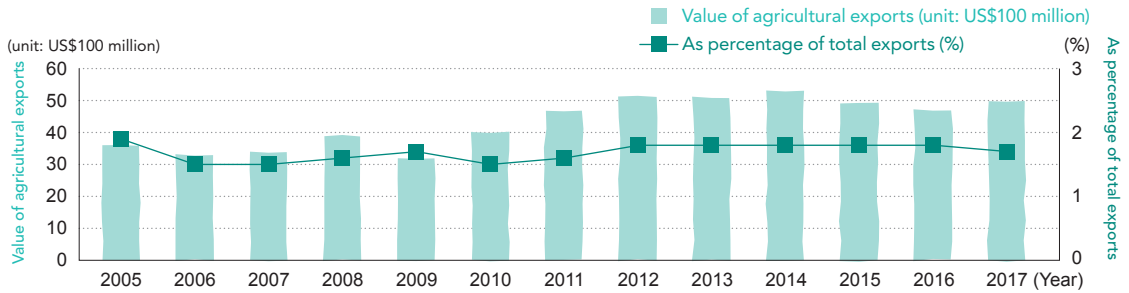
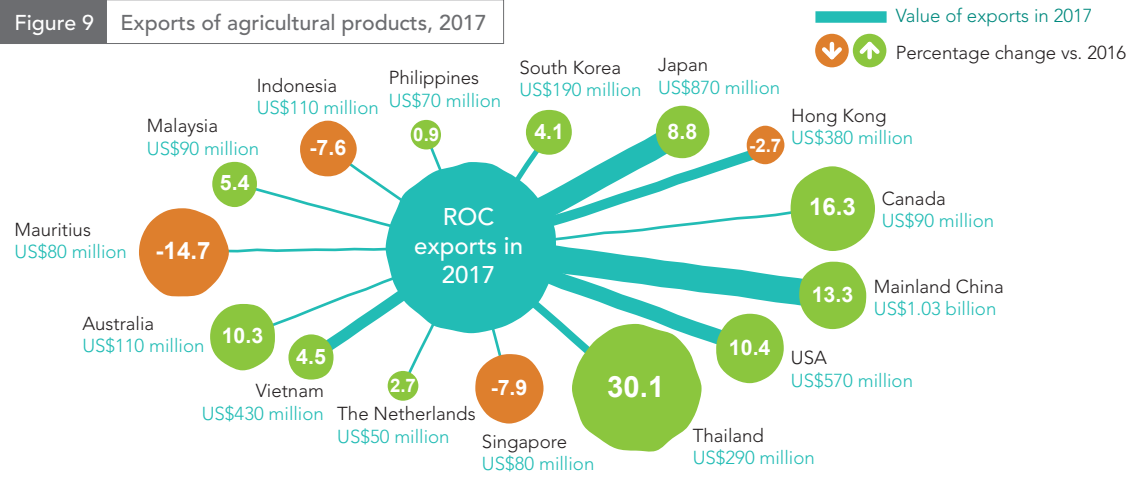
Source: Agricultural Statistics Yearbook

Figure 8 Value and planted area of selected agricultural products, 2006 vs. 2016



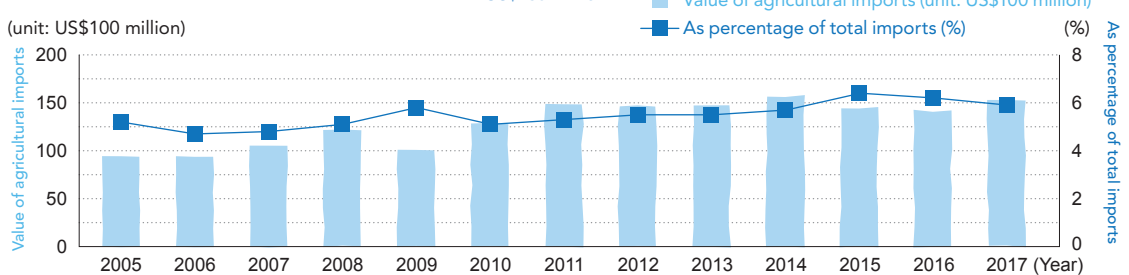
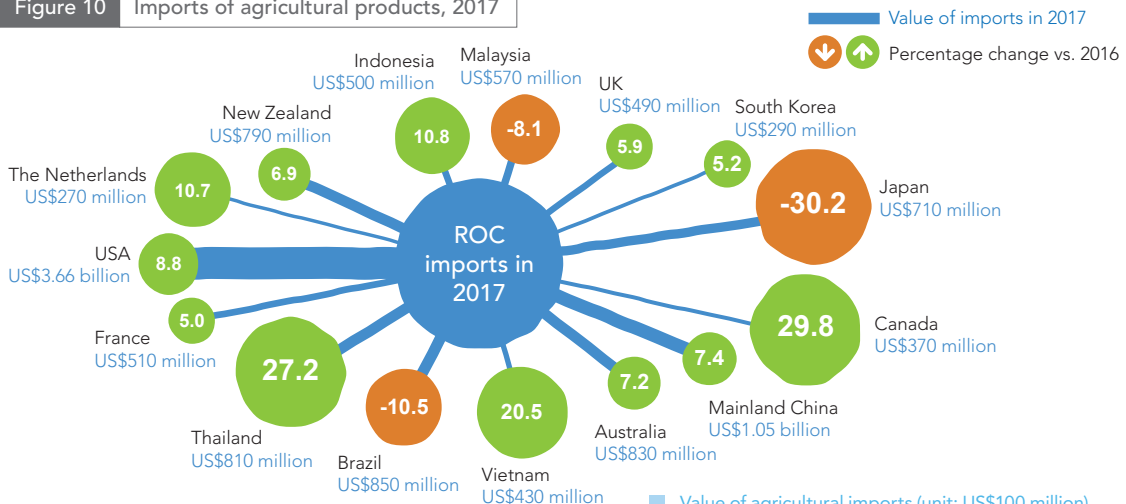
Source: Agricultural Statistics Yearbook

Figure 9 Exports of agricultural products, 2017



Source: Agricultural Trade Statistics of the ROC

Figure 10 Imports of agricultural products, 2017



Source: Agricultural Trade Statistics of the ROC